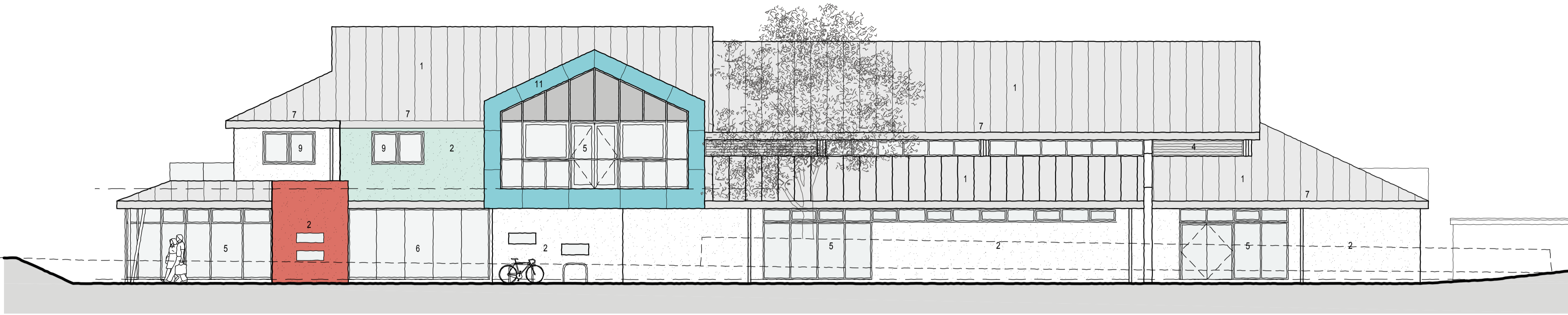


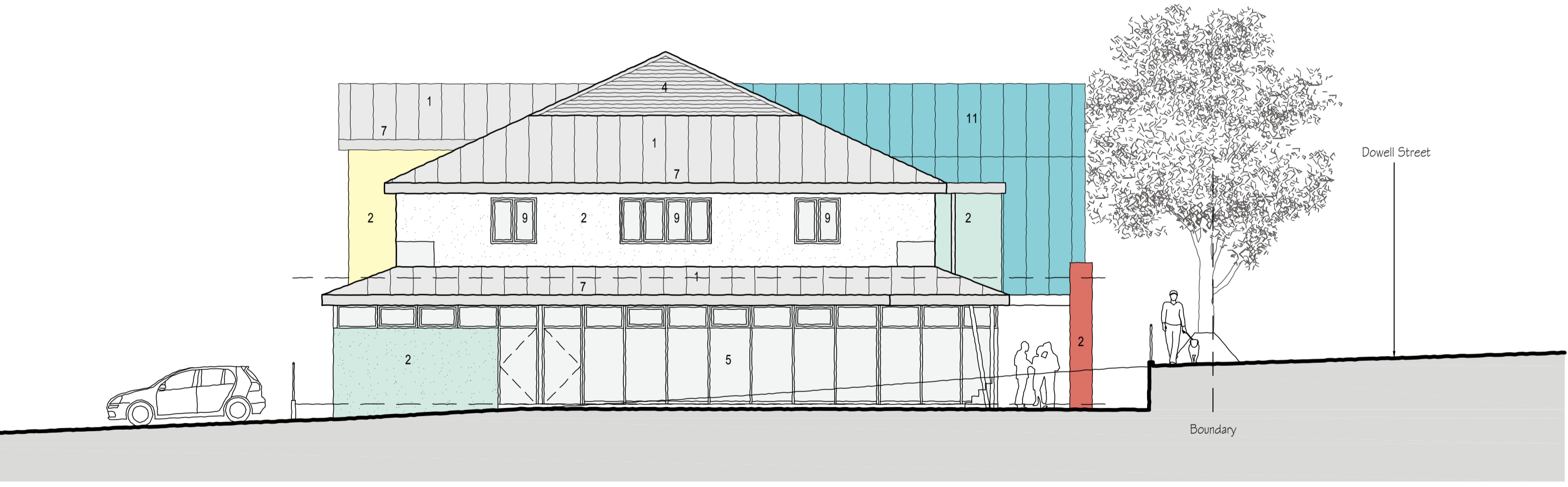
rev	date	description	drawn	checked
F	02.12.11	Colour references added to Materials schedule. RWP's added	JL	bp



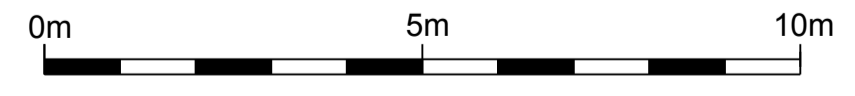
NORTH EAST

EXTERNAL MATERIALS KEY

- 1 Standing seam roof: Aluminium low sheen
- 2 Coloured render walls: BASF natural colour system - Green S1015-B20G, Yellow S0507-Y, Red S3040-Y90R, White.
- 3 Horizontal timber weatherboard: Sandalwood
- 4 Colour coated metal louvres: RAL 7030
- 5 Colour coated aluminium curtain walling with clear glazing. RAL 7030
- 6 Silicone Structural Glazing
- 7 Colour coated rainwater goods: RAL 7030
- 8 Galvanised coated metal guardrails
- 9 Colour coated aluminium performance windows with clear glazing: RAL 7030
- 10 Colour coated metal doorsets. RAL 7030
- 11 Colour coated metal panels: RAL 6034



SOUTH EAST



SCALE 1:100@A2
DATE: 30.11.11

THE HONITON COMMUNITY COMPLEX, DOWELL STREET, HONITON
NE & SE ELEVATIONS
21157/105F



WORKING IN PARTNERSHIP



baileypartnership
CONSTRUCTION AND PROPERTY CONSULTANTS